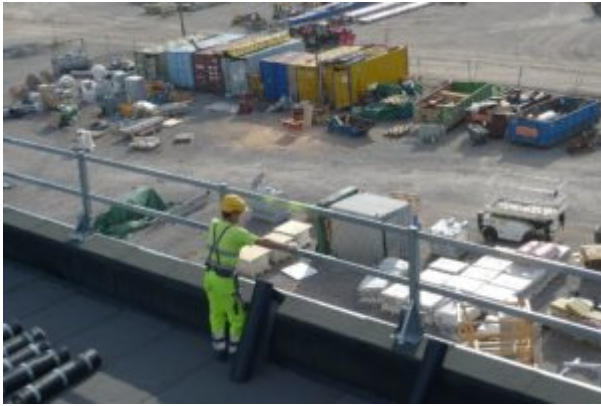


Spot the Safety Violation: Watch Your Step!



It's not clear from the picture how this gentleman arrived at his precarious perch. What is clear, is that he's got a fast way to get down – straight through the unprotected openings behind and to the side of him.

Let's break this down:

1. All it would take for our wayward roofer to meet his demise would be losing his balance from a slight wobble or sway caused by standing up after being bent over.
2. Or maybe he'd be so focused on his current task that he'd forget the sketchy platform he was standing on was not much wider than him. He really is one step away from falling – the makeshift platform is as deep as two of his shoes put end-to-end.
3. There is also no proper anchor point to connect his fall protection to – which really isn't an issue because he's not wearing any fall protection.
4. Finally, if you look down by his heel you can see tape covering the electrical cord of the tool he's using. Very likely covering up some damaged wires. In which case, electrocution is possible, as is getting shocked, startled, losing his balance, and falling into the unprotected roof opening behind him or falling forward and rolling down the roof.

Roof work is not exempt from fall protection requirements. A fall protection system and/or the use of fall protection equipment should be in use to make this job safe. The damaged electrical equipment should also be placed out of service, repaired, or properly disposed of.

Share this with your crews and see what other hazards and fixes they can come up with.



https://www.reddit.com/r/OSHA/comments/8edlcu/is_this_safe/